



Bridge Track

Emily Rhea, Eco Achievers



Eric Barton, Biltmore Homes



Mark Wille US Engineered Wood



Mockups & Testing Assemblies



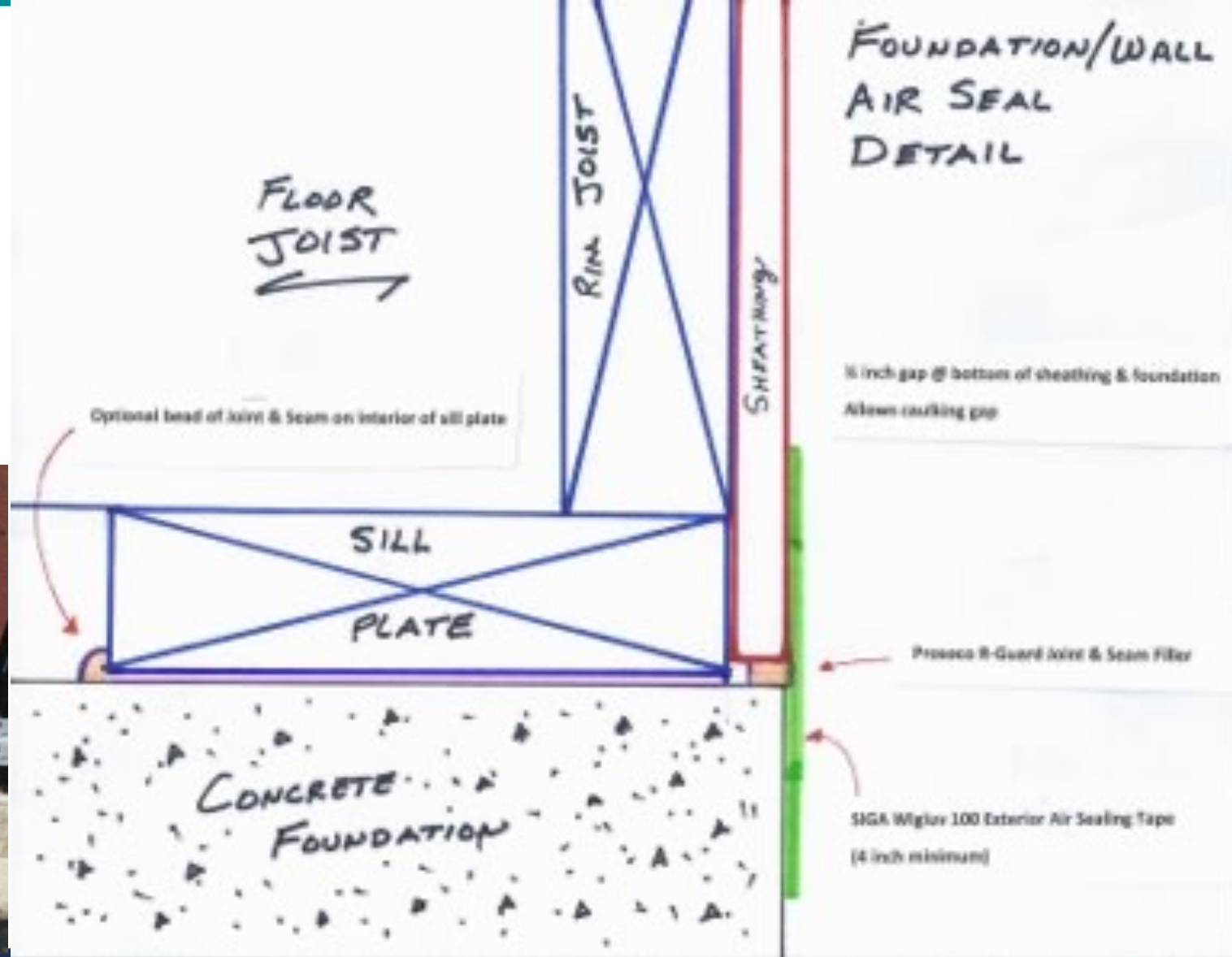
Identify issues with the air sealing methods **BEFORE** they are all installed on the entire building.

- Windows
- Walls
- Fluid Applied Air Barriers

Existing Shells



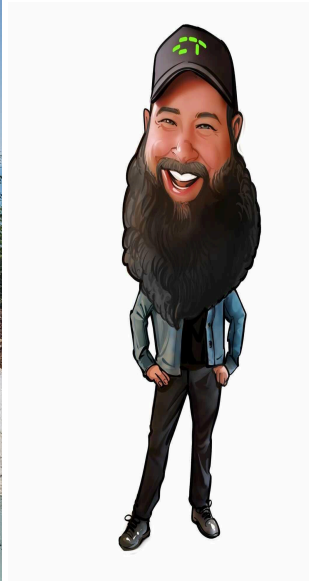
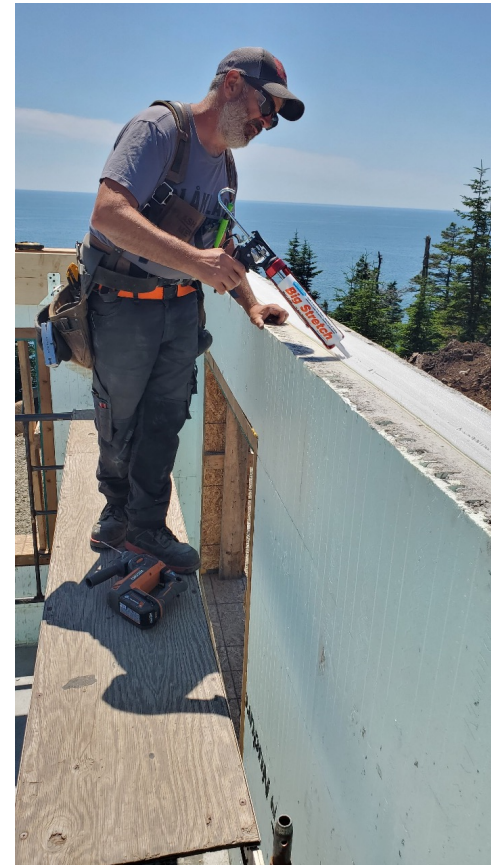
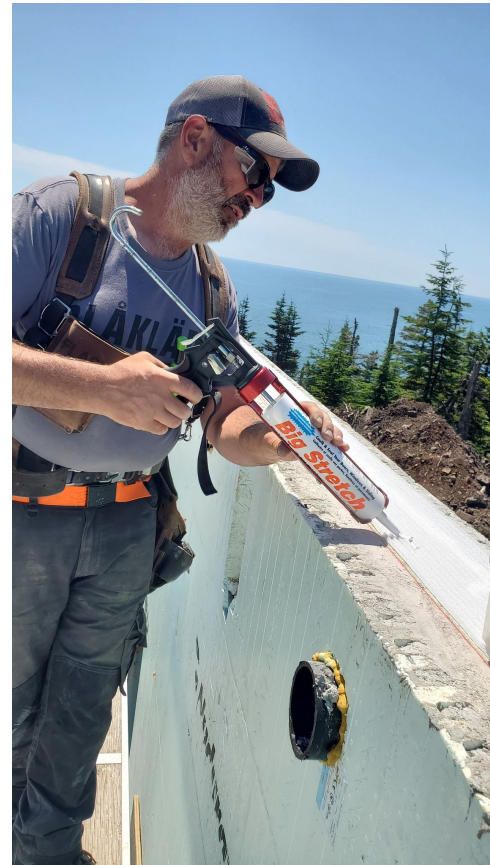
Sill Seal



Delivering the base plate smooosh



- Photos of flexible seal on top and below the sill seal



**BIG
DPAWOG**
Construction Inc.

Reimagine Construction Sequencing



Complete the Air Barrier as early as possible.



Mid Construction Blower Door Testing should be done:

- AFTER the majority of windows and doors are installed.
- AFTER the primary air barrier is complete on all sides (fluid applied, tapes, sealants installed)
- BEFORE any insulation is installed. (continuous insulation on the exterior, cavity insulation and attic insulation)

Create a plan/mockup and test



- MockUp at Window and #thereddooroftruth



Liquid Applied system at wall/window



- Windows Liquid applied



Tips for Success



Have the right Tools + On Site QA



need to be paying attention, builder needs to be 100% on board with the air tightness goal from the beginning.



Roll Tape



Understand manufacturers instructions and follow them etc.

